



En säker IT arbetsplats i en Hybrid molnmiljö

Peter Söderholm

Director, Systems Engineering Nordic

Nichlas Ströberg

Senior Systems Engineer, Networking

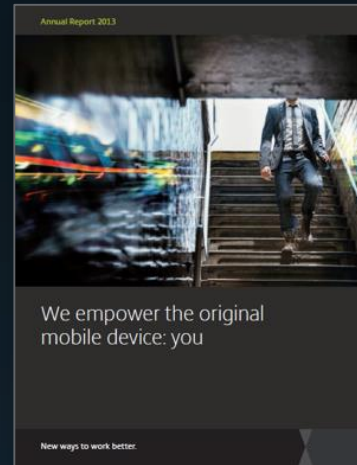
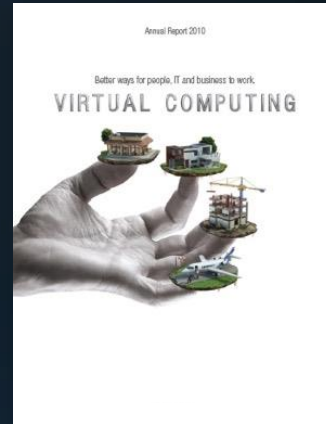
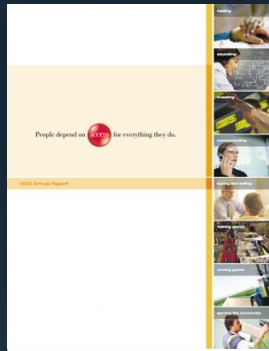
Gabriel Yttermalm

Business Developer – Cloud

Friday, November 8, 2019

© 2019 Citrix | Confidential





1989

2019



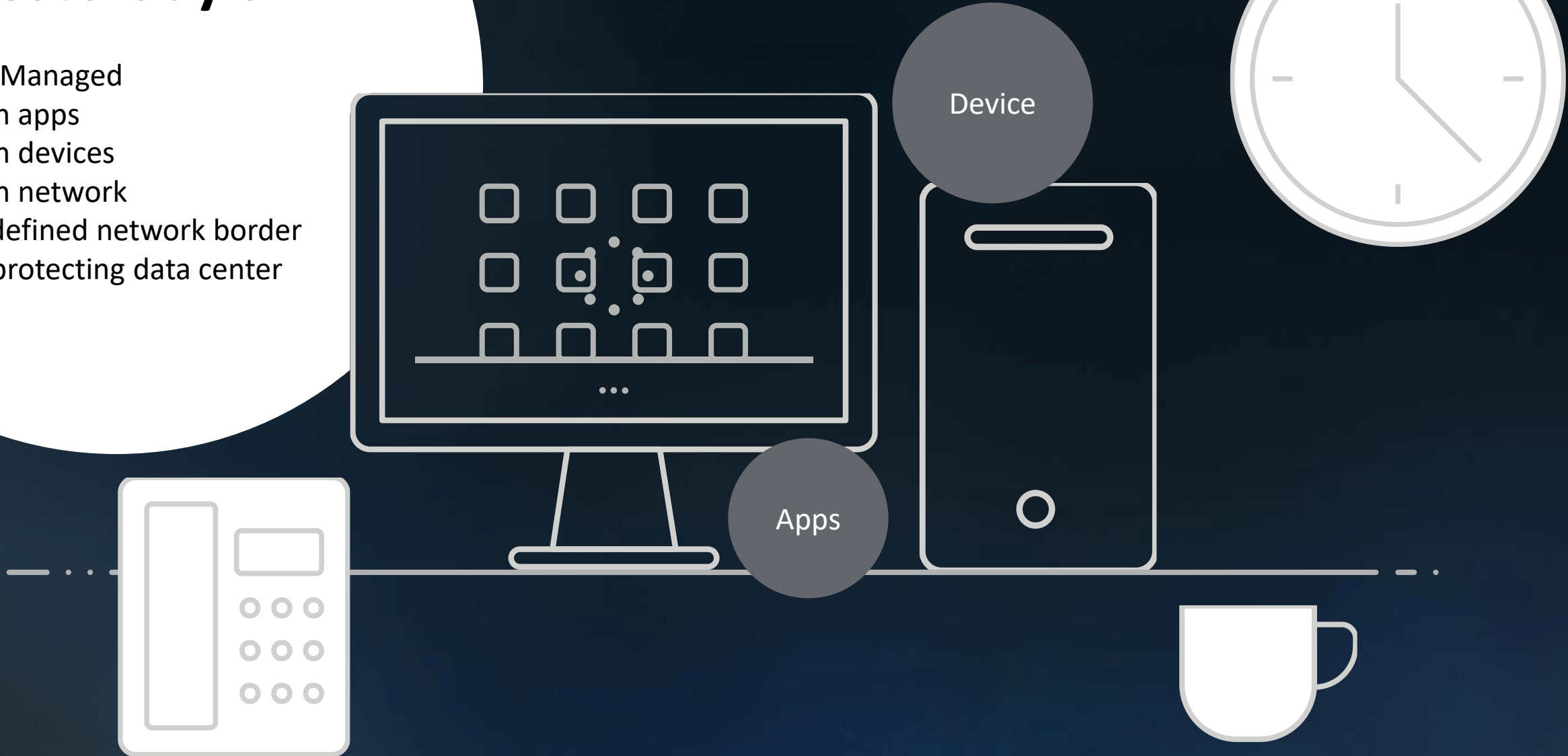
Antiquated, cumbersome
employee experiences

IN BOX

OUT BOX

Yesterday's IT

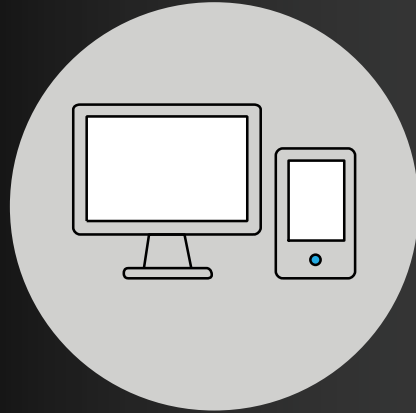
- Local/Managed
- Known apps
- Known devices
- Known network
- Well-defined network border
- DMZ protecting data center



Modern, delightful customer experiences



Transforming how people work



Traditional Workplace

Single Device
Business Owned
Corporate Network & Legacy Apps
Manual
Reactive
High-Touch



Modern workplace

Multiple Devices
User and Business Owned
Cloud Managed & SaaS Apps
Automated
Proactive
Self-Service

Three quarters of enterprises agree there is a need for a **new security framework** to address the threat of cybersecurity.

- Cloud & App Sprawl
- Distributed work styles
- Un-sanctioned storage
- BYO & multiple Devices
- IT complexity
- Motivated hackers
- Vast attack surfaces
- Malicious behaviors

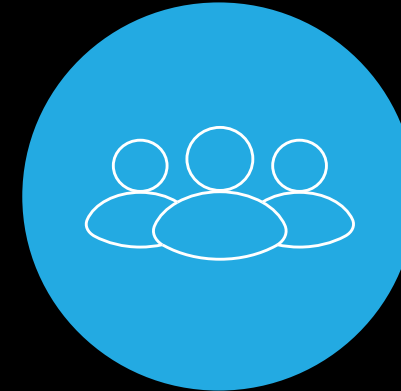
*The Need for a New IT Security Architecture;
Citrix and Ponemon Institute*

Design security around people and insights



Traditional

Attack-centric (Unknown entities)
Where to apply the policy?
Force user to where security exists
Zone-based (Trusted DMZ, intranet)
Doors and locks



People-centric

User identity-based (Users are known)
What to apply the policy on? (Digital workspace)
Follow the user wherever they are
Context-based user interactions with apps, data,
network
System of detectors



We believe there is
a better way

Experience



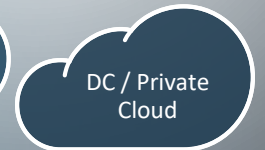
SaaS + mobile apps



Public cloud content



Public cloud apps



On-prem data center

Security



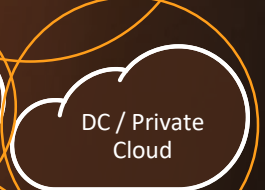
SaaS + mobile apps



Public cloud content



Public cloud apps



On-prem data center

Choice



Experience + **Security** + **Choice**

Saab - Keeping People and Society Safe



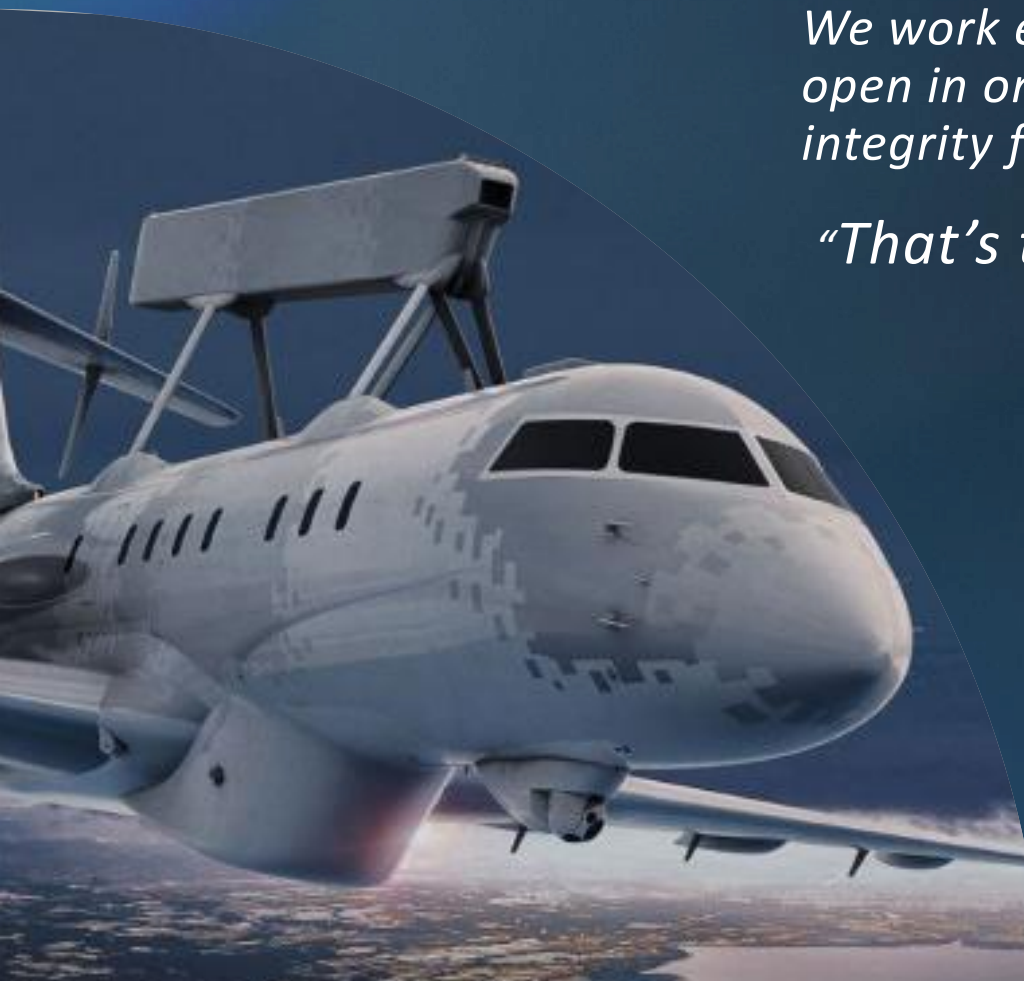
We work every day with classified information. And while we need to be open in one end, we need to be very closed in another to ensure data integrity for those we serve,” Mats Hultin, Group CIO, Saab.

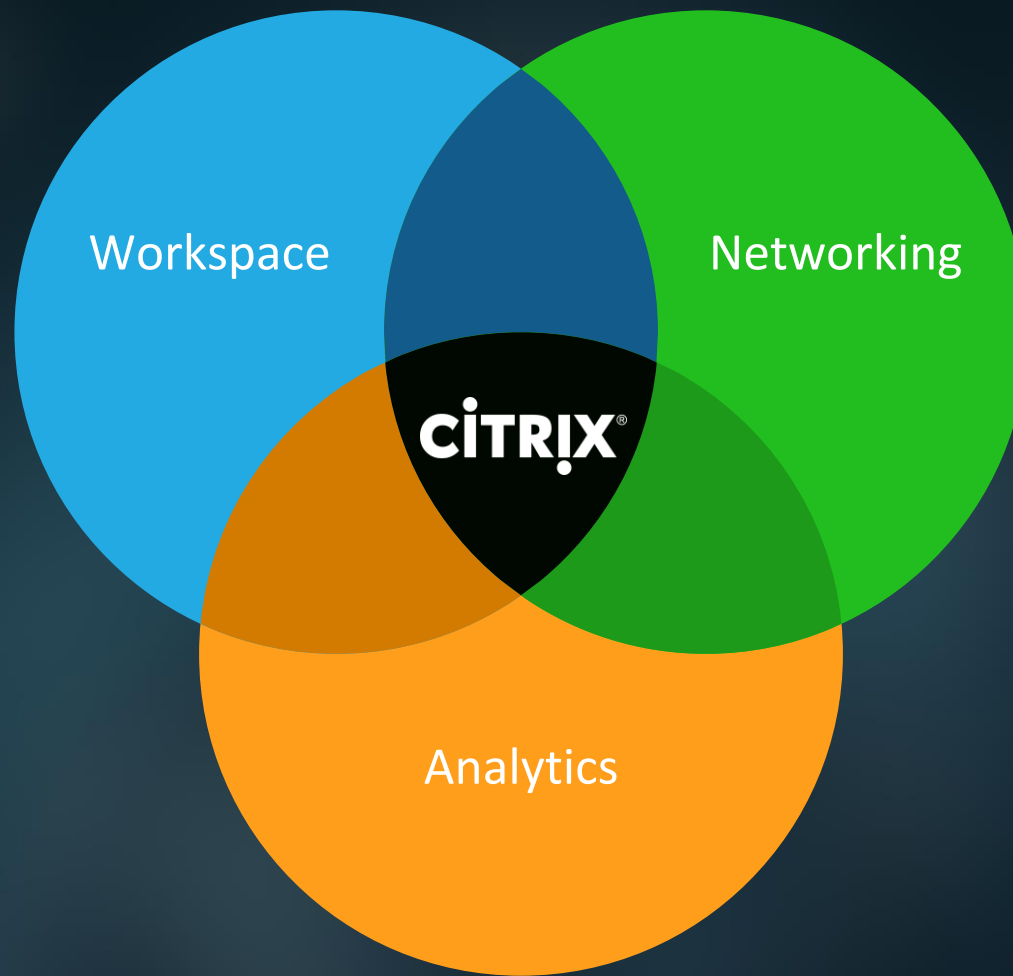
*“That’s the key for us – to balance **security** and **agility**.”*

The modern platform we have today as a workplace solution really helps us integrate new companies very effectively, with the latest company we bought, we were able to **give everyone virtual access to the Saab environment two days after commercial signing.***

“And that’s how fast we need to be”

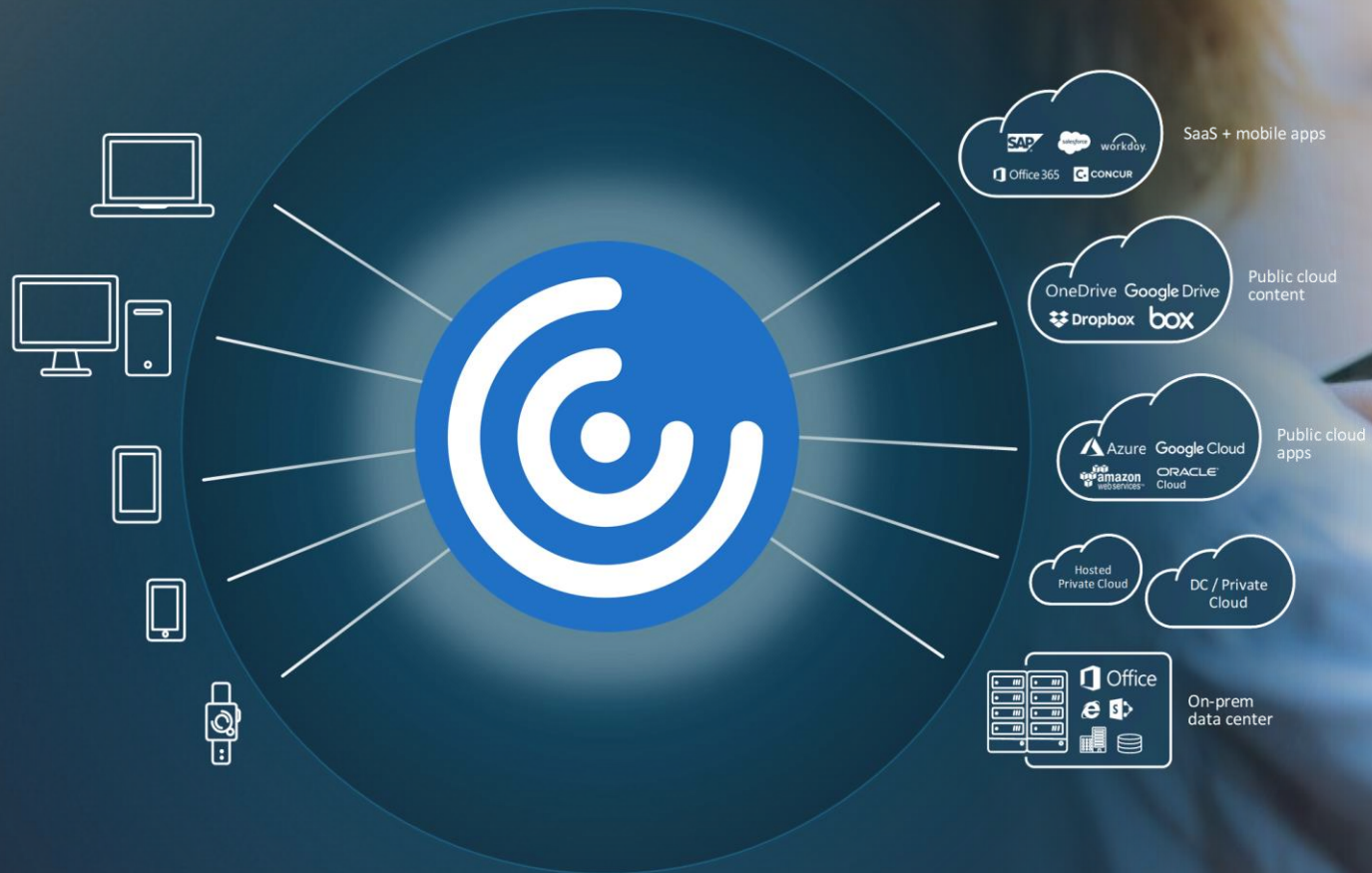
* Solution: Digital workspace in which all employees and partners can share technology, ideas and thinking

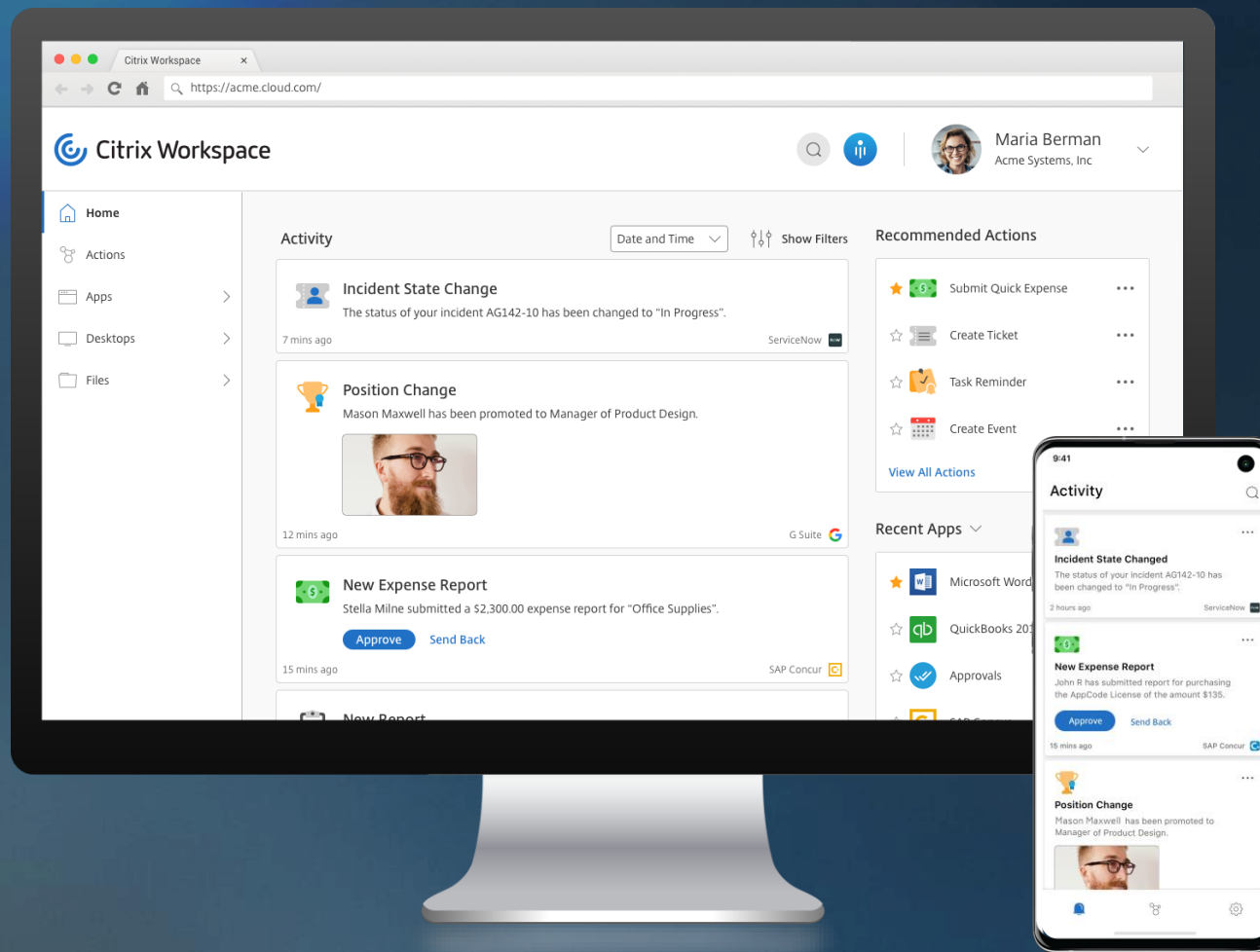




Citrix Workspace

Everything you need to be
productive in one experience





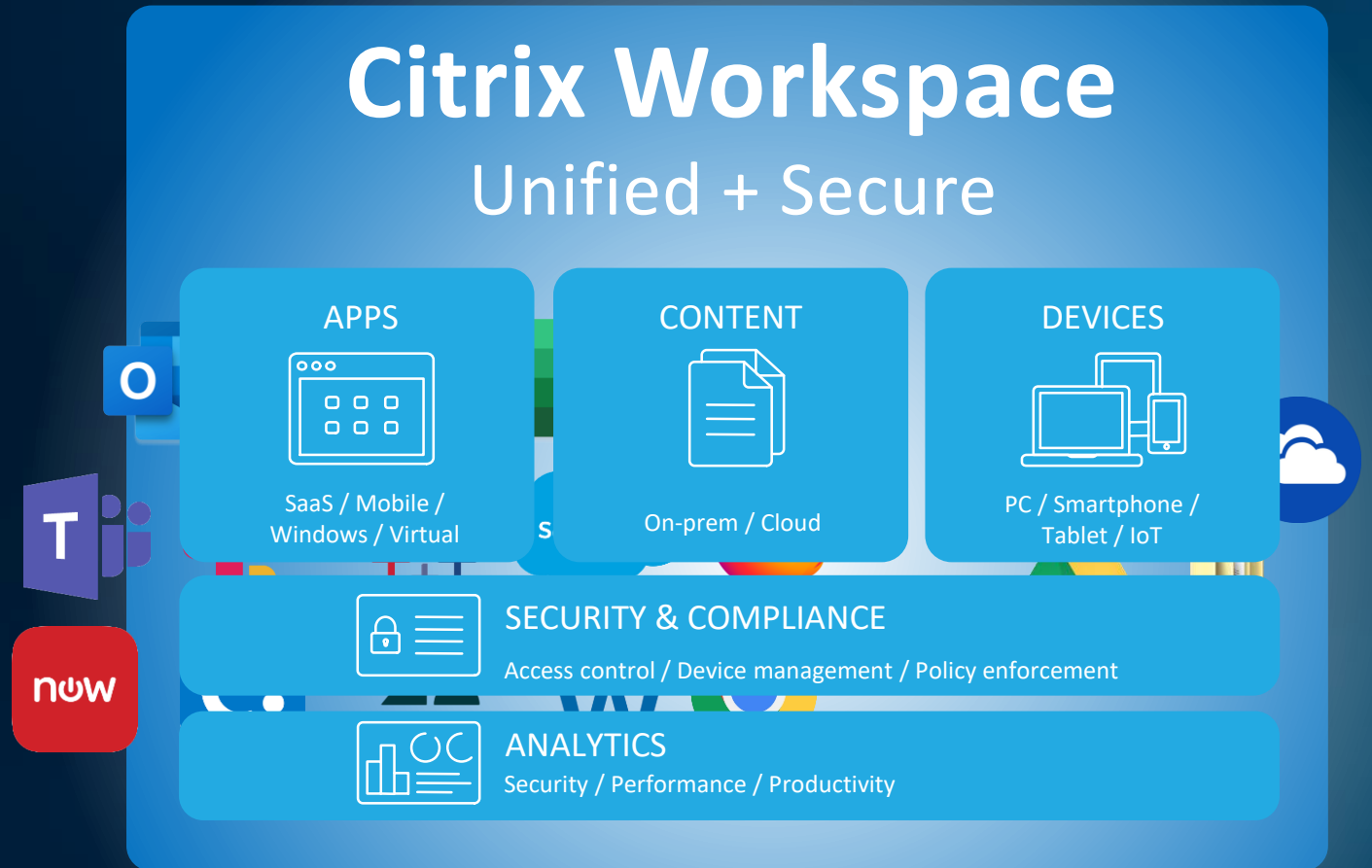
Citrix Workspace

- One consumer-like experience across every device
- Single sign-on to all your apps and data
- Universal search
- Contextual security and performance

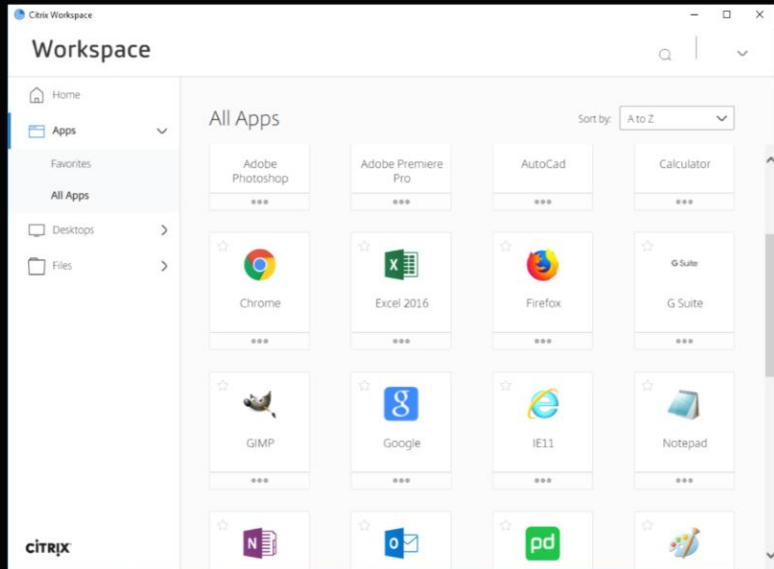
Disconnected apps



> Organize work



Access Control



Workspace

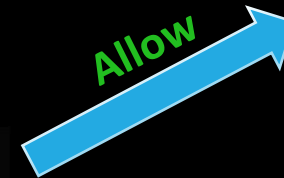
Enhanced Security OFF

Open in standard browser



Internet

Allow



Enhanced Security ON



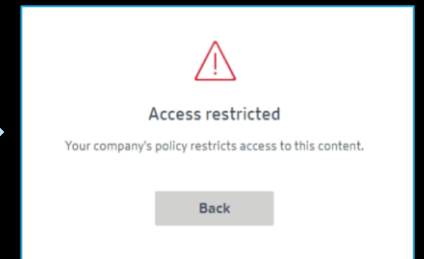
Open in embedded browser



Deny



Redirect



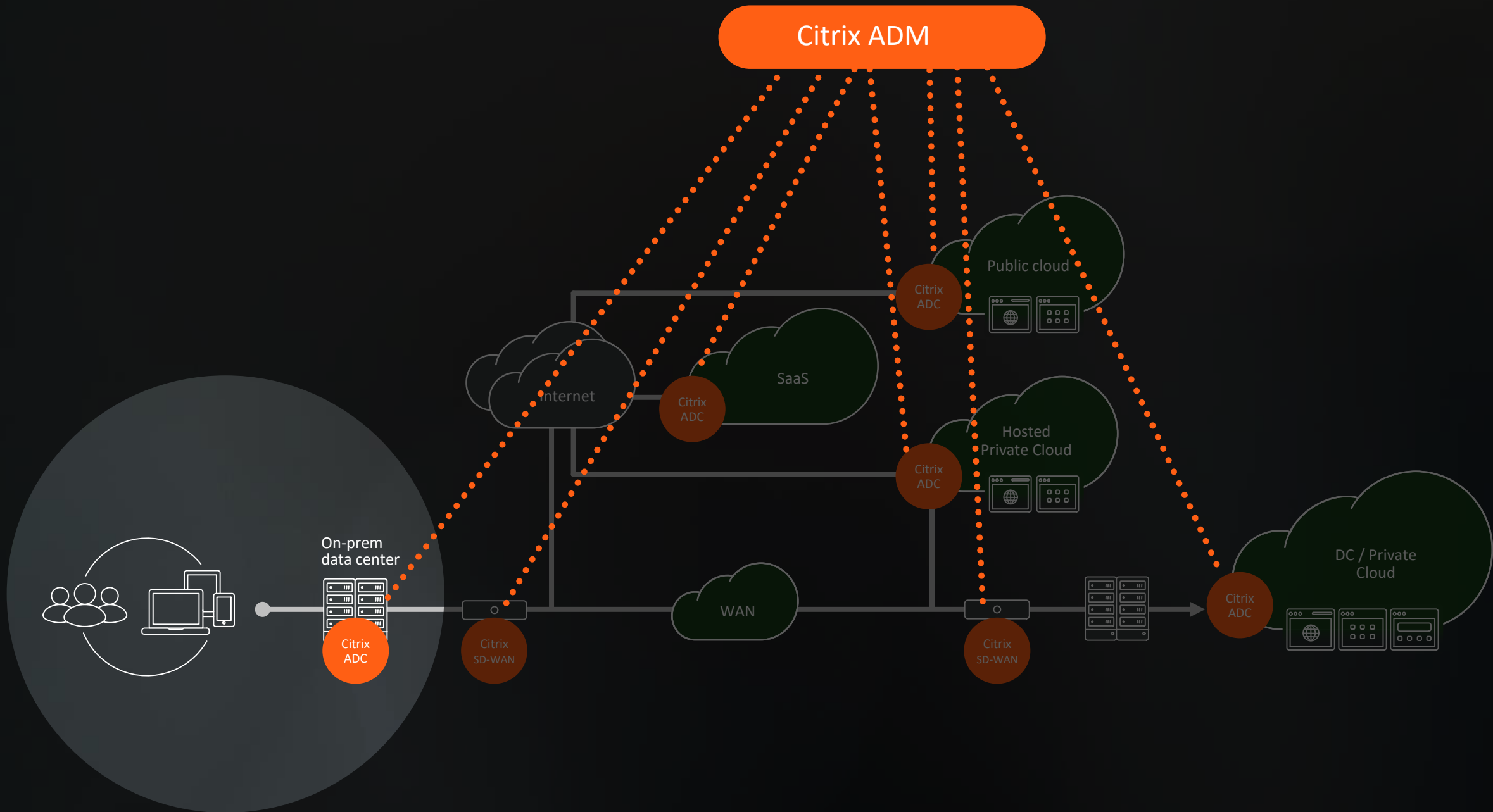
Secure Browser Service



Citrix Networking

Unified control, performance and security
for every user, location and cloud

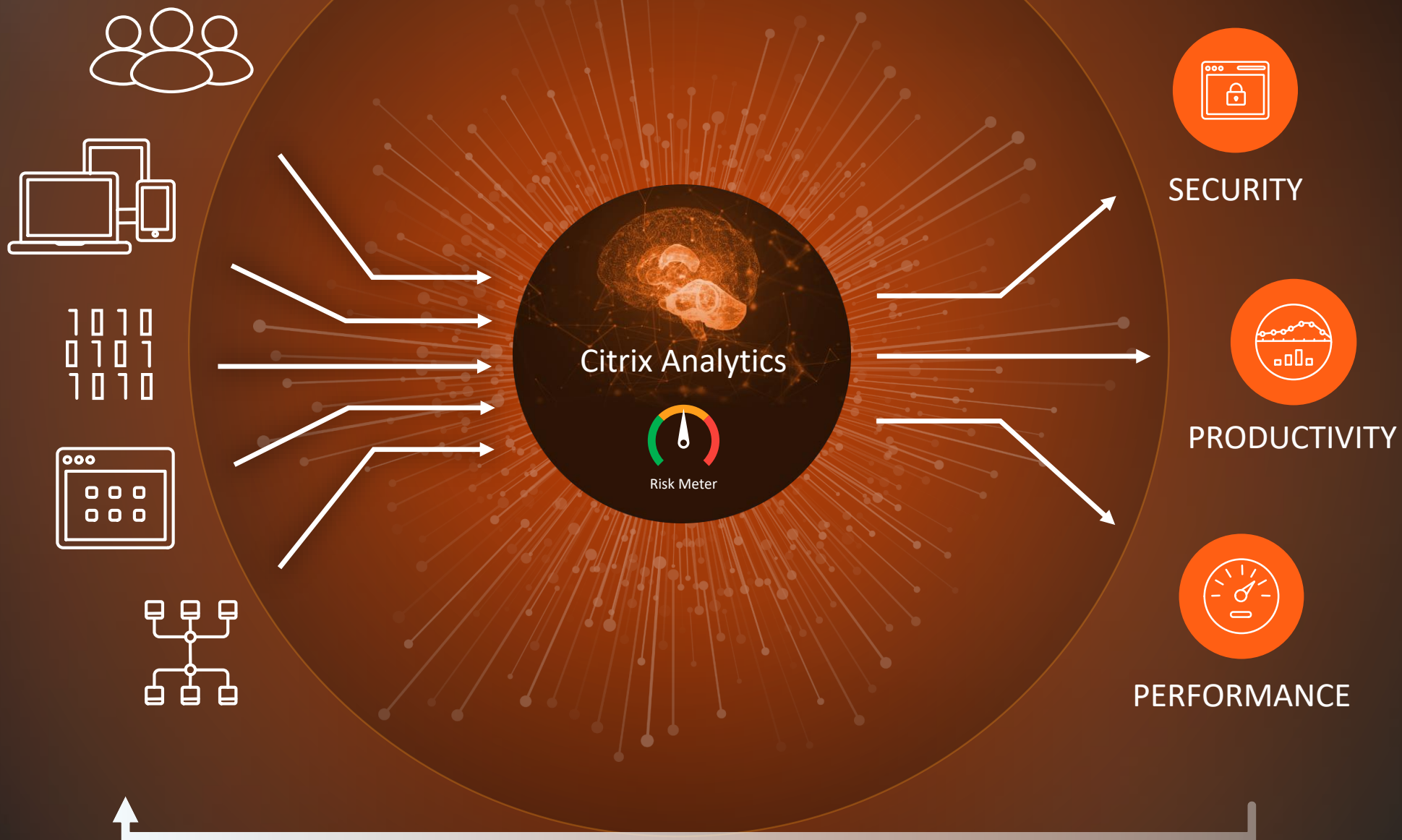




Citrix Analytics

Single view and proactive resolution
for all your security, performance and
productivity needs





The background of the image is a dimly lit, modern office. Several people are seated at long wooden desks, working on computers. The office has large windows with blinds, and modern desk lamps are visible. The overall atmosphere is professional and collaborative.

citrix®

Power a better way to work